

# SAINT PAUL PLACE

330 - 336 SAINT PAUL ST, BALTIMORE, MD 21202

**Buildings For Sale**



## **BUILDING TYPE:**

4 Story Multifamily with First Floor Retail

## **FEATURES:**

Opportunity Zone

Assumable Low Interest Financing

## **AVAILABILITY:**

First Floor Retail/Office

## **ABOUT THE PROPERTY:**

St. Paul Place is located in Downtown Baltimore and the Central Business District. Blocks to the retail and restaurants of the Inner Harbor, and adjacent to the historic Mt Vernon neighborhood. Steps away from Mercy Medical Center, a top hospital and employer in the area. Camden Yards, home to the Baltimore Orioles, is also located within walking distance. Abundant local dining, shopping and entertainment. Steps to downtown's only grocer, Streets Market and Cafe. The subject property has a Walk Score of 99, ranking it a Walker 's Paradise.

[Click For Street View](#) 

**Matt Gorman**

D | 571.765.4422

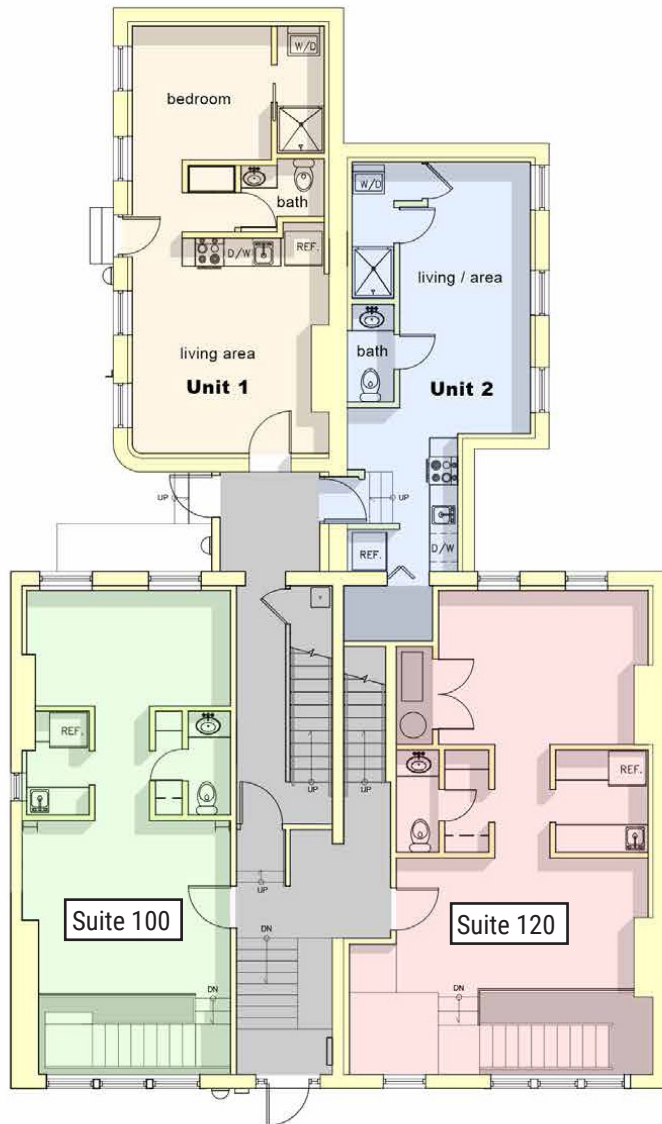
C | 240.460.6590

mgorman@renaudconsulting.net

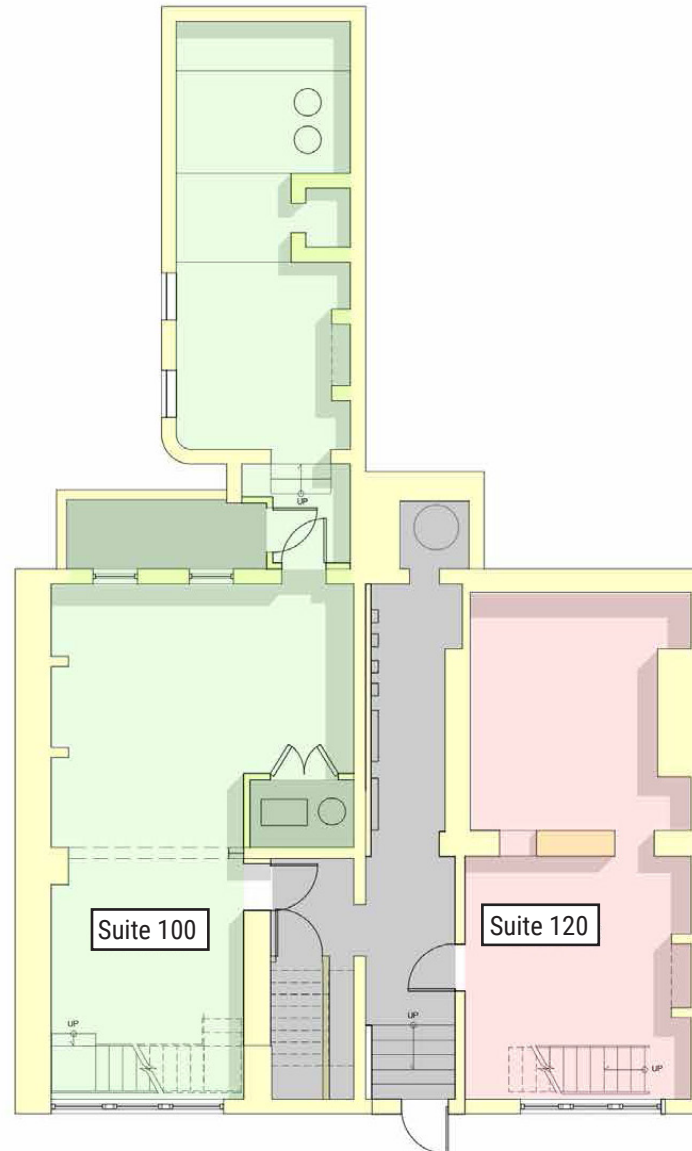


# Leasing Plan

First Floor



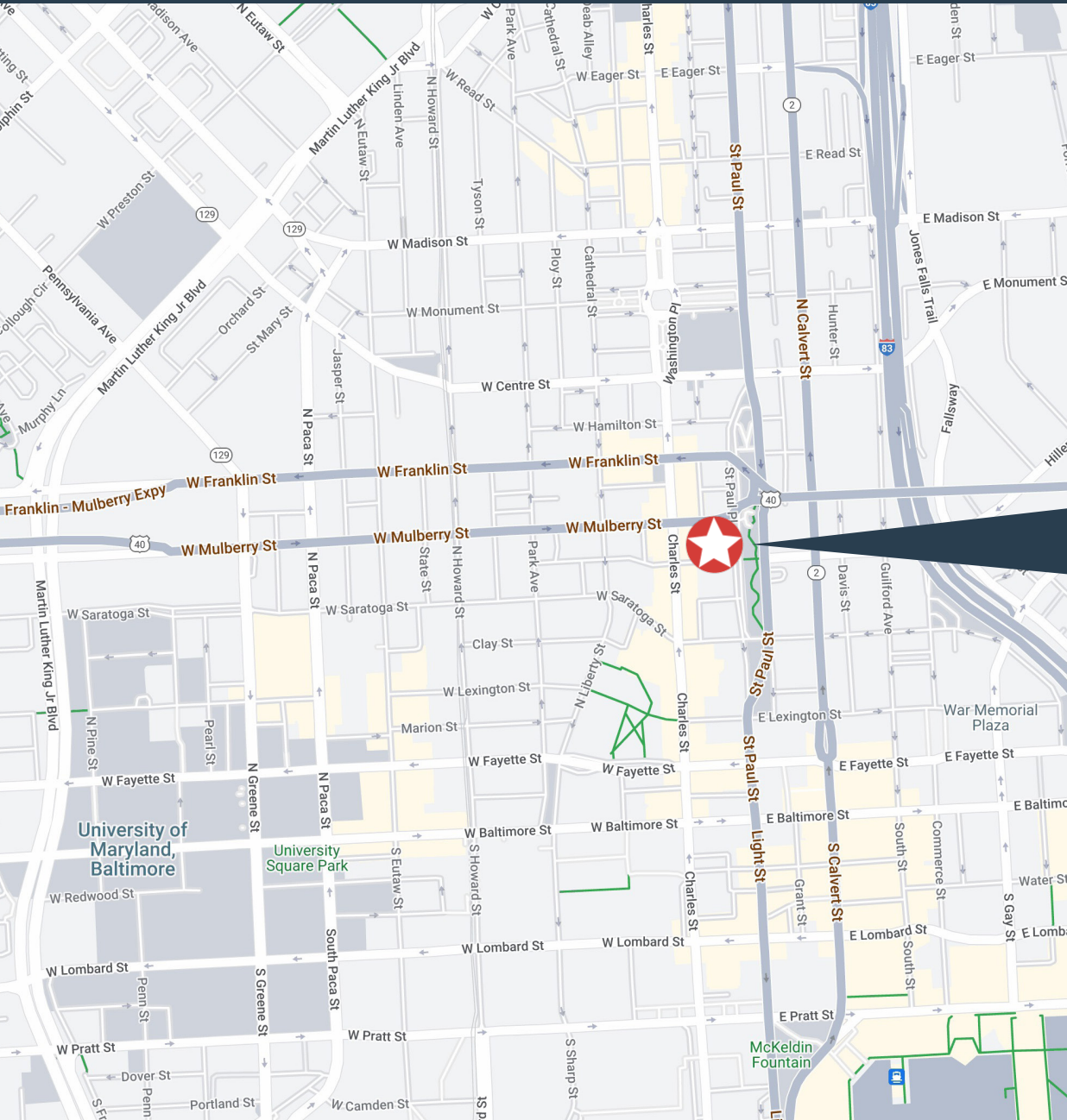
Basement



**HIGHLIGHTS:**

- Opportunity Zone
- Assumable Low Interest Financing
- Space available directly across from hospital.
- Located in Downtown Baltimore just minutes from city attractions.
- Great location for studio, professional services, or office space
- Nearby access to major interstates I-83 and I-95.
- Strong Daytime Employee Count at 82,059 within just 1-mile.

# Location Map



## DEMOGRAPHICS

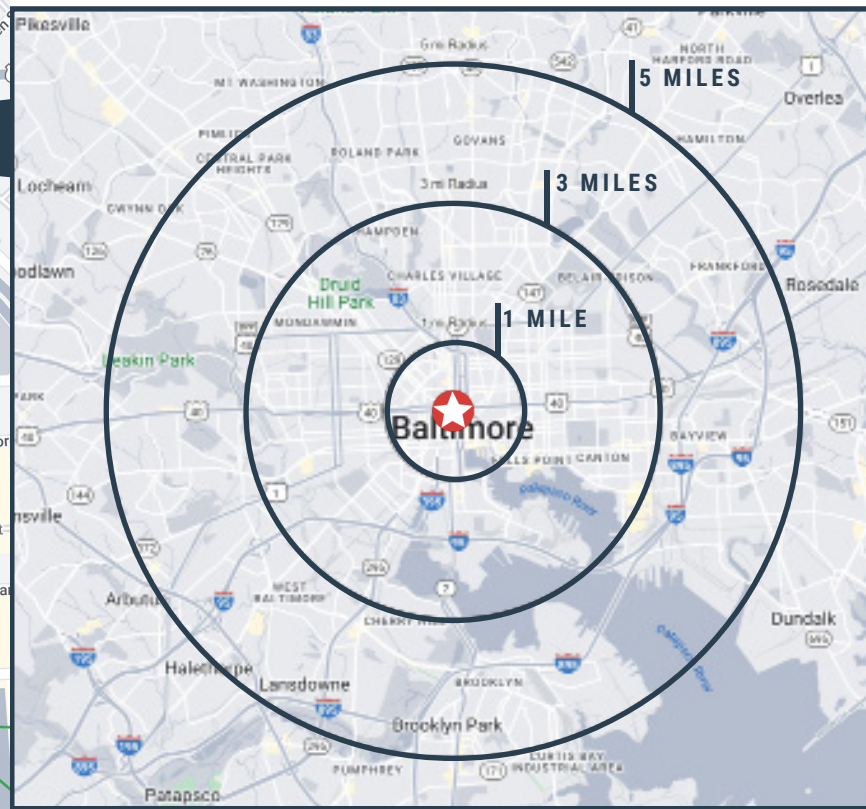
POPULATION AVG. INCOME DAYTIME EMP

	POPULATION	AVG. INCOME	DAYTIME EMP
1 mile	45,484	\$84,657	82,059
3 mile	259,047	\$106,885	183,693
5 mile	518,975	\$108,776	272,115

## TRAFFIC COUNTS

E MULBERRY ST	16,942 ADT
ST PAUL ST	12,379 ADT

[CLICK FOR DEMOGRAPHIC REPORT](#)



# Competition Map

