



RENAUD
CONSULTING
COMMERCIAL REAL ESTATE

Quick Facts

PROJECT SIZE

± 4.5 Acres

AVAILABILITY

1 Acre

DEMOGRAPHICS

POPULATION AVG. INCOME DAYTIME EMP

	POPULATION	AVG. INCOME	DAYTIME EMP
1 mile	6,810	\$137,624	1,025
3 mile	37,098	\$134,429	6,966
5 mile	69,529	\$124,570	17,665

Click For Street View



Hull Street Retail Pad Site

15516 Hull Street Road, Chesterfield, VA 23832

Pad Site for Sale



○ Mark Fontaine, CCIM

Cell | 703.431.6938

Email | mfontaine@renaudconsulting.net

- 1 acre available for a QSR with a drive-thru
- Located in Western Chesterfield's fastest growing, affluent neighborhoods.
- Signalized intersection of Hull Street Road (44,000 VPD) and Fox Club Parkway.
- Strategically located across from Hampton Park (749 Units) and close to Magnolia Green (4,055 Units).



Phone: 703-404-2346 | 8605 Westwood Center Drive • Suite 410 • Vienna, Virginia 22182 | renaudconsulting.net



Aerial

RENAUD
CONSULTING
COMMERCIAL REAL ESTATE

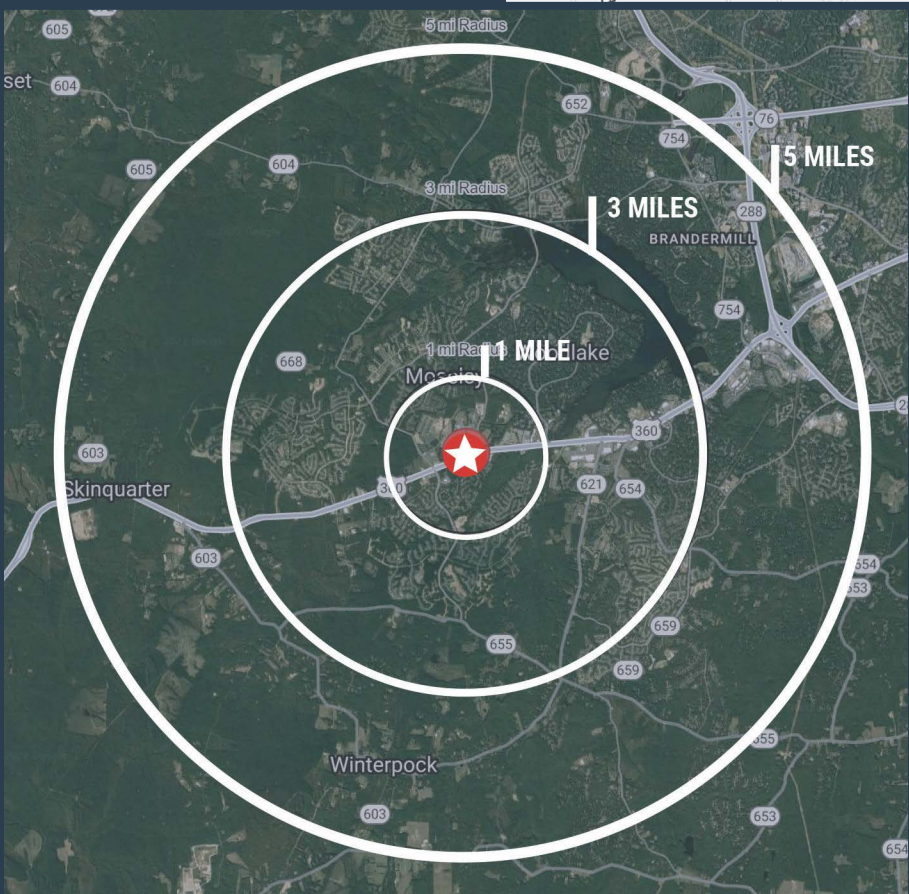
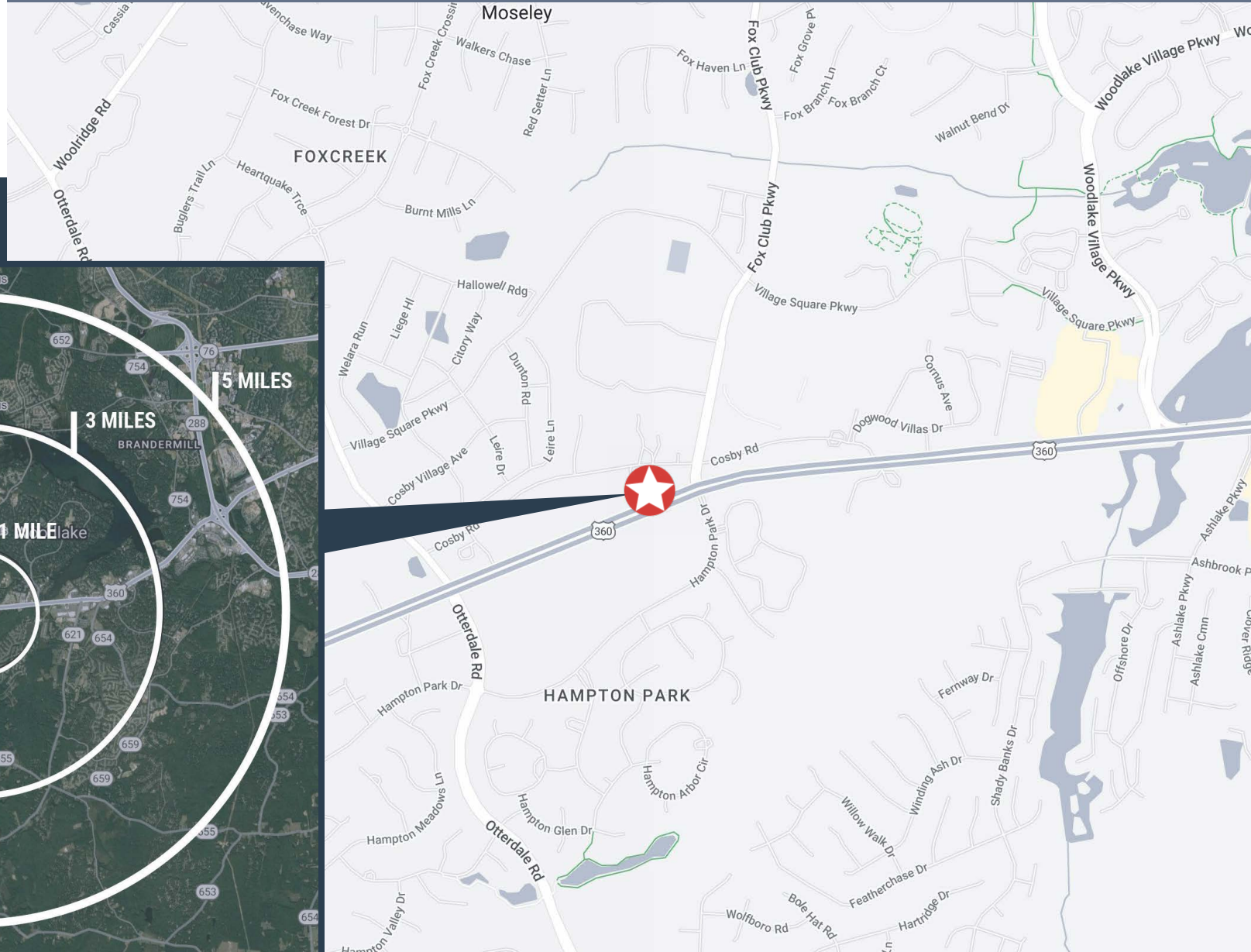




Location Map

RENAUD
CONSULTING
COMMERCIAL REAL ESTATE

Radius Map





Competitive Map

RENAUD
CONSULTING
COMMERCIAL REAL ESTATE

In The Area

NEARBY RETAILERS

- Aldi
- YMCA
- Burlington
- Walmart
- Hobby Lobby
- Five Below
- Publix
- Wawa
- AutoZone
- Great Clips
- Food Lion
- Dollar Tree
- Tractor Supply Co
- Goodwill
- Starbucks
- Longhorn
- McDonalds
- 7-Eleven

