

## ○ QUICK FACTS

### AREAS TARGETED:

Washington DC Metro Area

### SIZE REQUIRED:

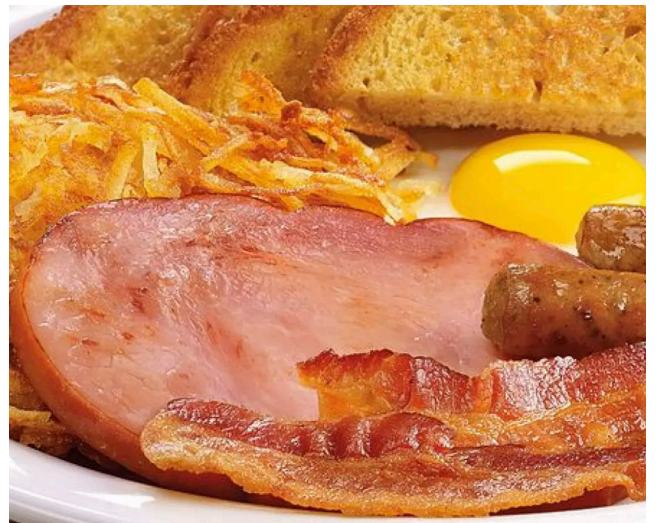
5,000 - 7,000 SF  
End caps freestanding, turnkey on busy corridors

### WHAT IS DENNY'S?

For over 65 years, Denny's has been a welcoming place where people can connect over great food. We're always open, always serving your favorites, and we're proud to be America's diner.

Learn more: <https://www.dennys.com/>

## SEEKING NEW LOCATIONS



## ○ CONTACT

**James O'Neill**  
Direct | 571.765.4435  
Cell | 703.862.1277  
Email | [joneill@renaudconsulting.net](mailto:joneill@renaudconsulting.net)