



# Idylwood Village West

7612 Matera Street, Falls Church, VA 22043

**Multi-Family Apartments**

**RENAUD**  
**CONSULTING**  
COMMERCIAL REAL ESTATE

## Quick Facts

### PROJECT SIZE

396 Units

### AVAILABILITY

Go to [apartments.com](http://apartments.com)



 **Teresa Brooks**

Phone | 703.893.6561

Email | [Idylwoodvillagewest@cox.net](mailto:Idylwoodvillagewest@cox.net)

Find your new home at Idylwood Village West in Falls Church, VA. The rental community has a host of amenities. Located in a quiet neighborhood, you can spend your time at home away from the usual hustle and bustle.

Get some exercise at the complex's swimming pool. While in-unit washers and dryers aren't offered, this complex has an on-site laundry facility available - so no need to drive to an off-site laundromat. The tree-lined streets make this community a charming place to live. For residents with a car, street parking is the only available option. However, if you aren't up for dealing with the hassles of a car, they can easily be avoided in such a pedestrian-friendly area.

[Click For Street View](#)



Phone: 703-404-2346 | 8605 Westwood Center Drive • Suite 410 • Vienna, Virginia 22182 | [renaudconsulting.net](http://renaudconsulting.net)





# Apartment Site Plan

**RENAUD**  
**CONSULTING**  
COMMERCIAL REAL ESTATE

## Availability

For information on availability,  
go to [apartments.com](http://apartments.com)

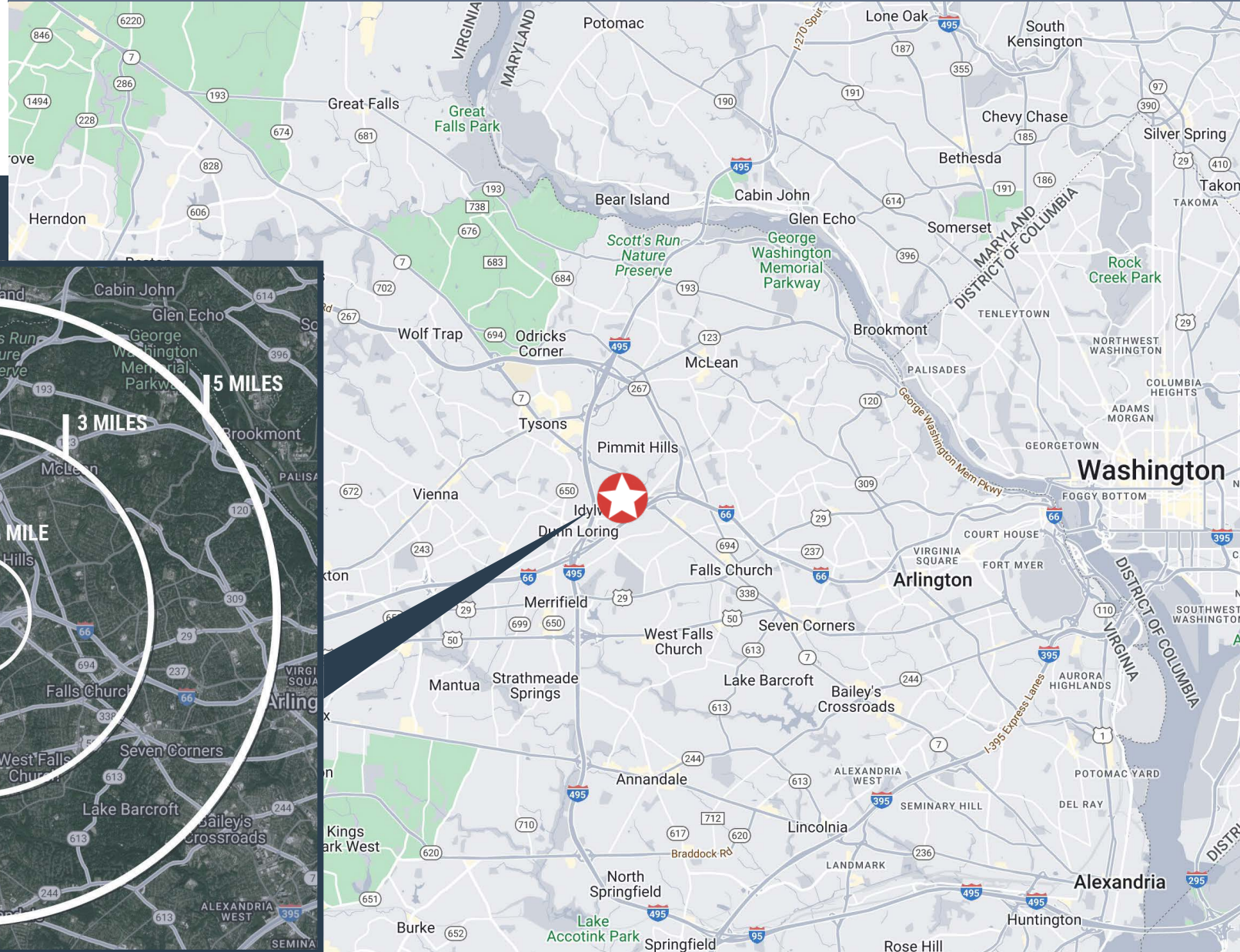




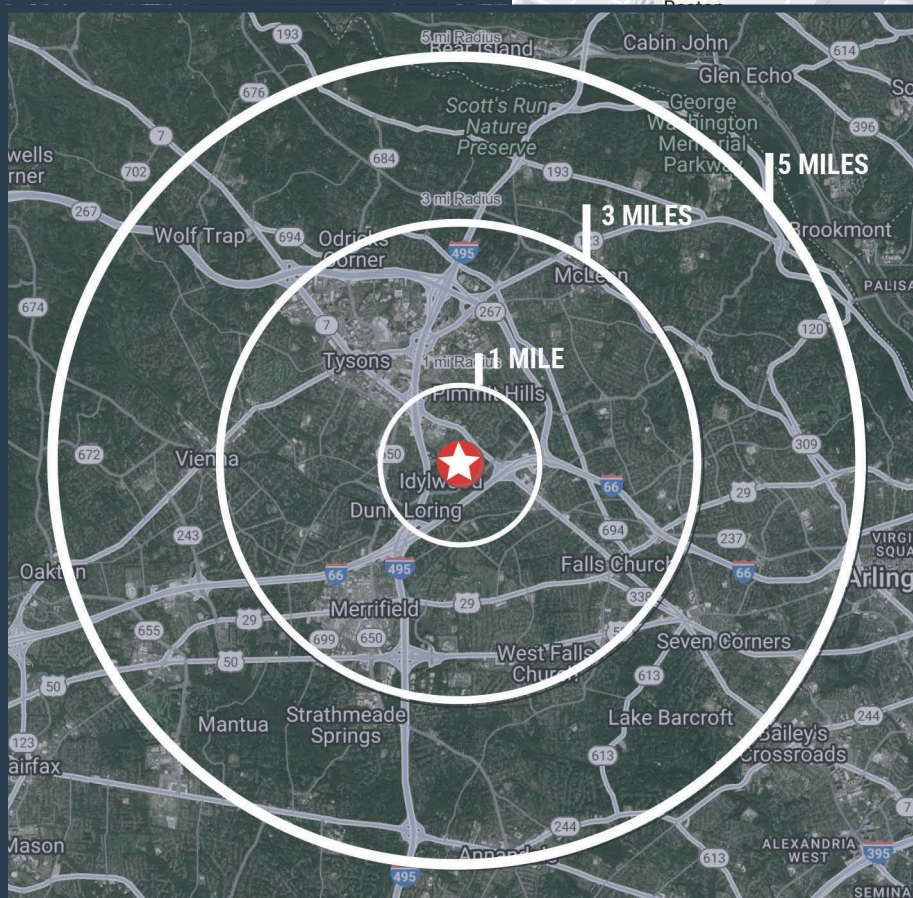


# Location Map

**RENAUD**  
**CONSULTING**  
COMMERCIAL REAL ESTATE



# Radius Map



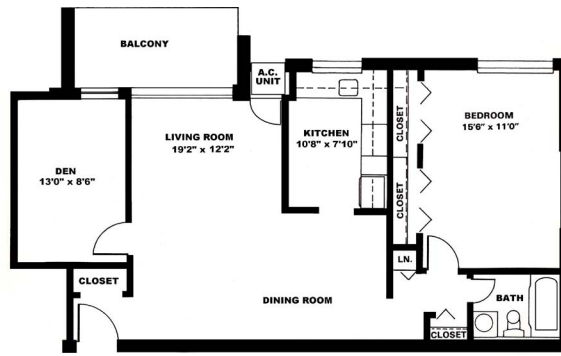


# Apartment Floor Plans

**RENAUD**  
CONSULTING  
COMMERCIAL REAL ESTATE

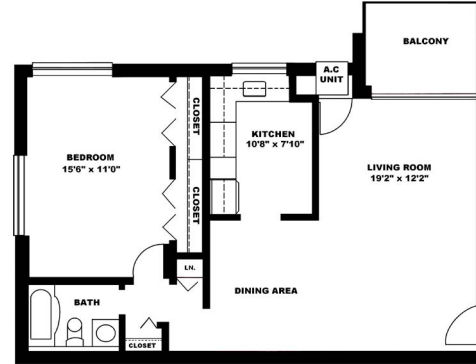
## Amenities

- High Speed Internet Access
- Laundry Facilities
- Maintenance on site
- Property Manager on Site
- Furnished Units Available
- Recycling
- Pool
- Playground
- Dishwasher
- Disposal
- Stainless Steel Appliances
- Kitchen
- Oven
- Range
- Refrigerator
- Freezer



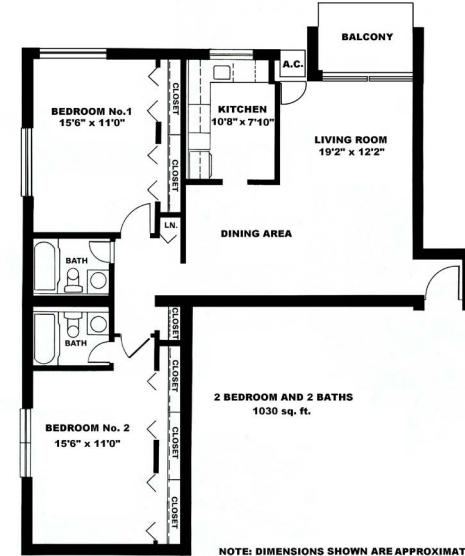
1 BEDROOM & DEN  
900 sq. ft.

NOTE: DIMENSIONS SHOWN ARE APPROXIMATE

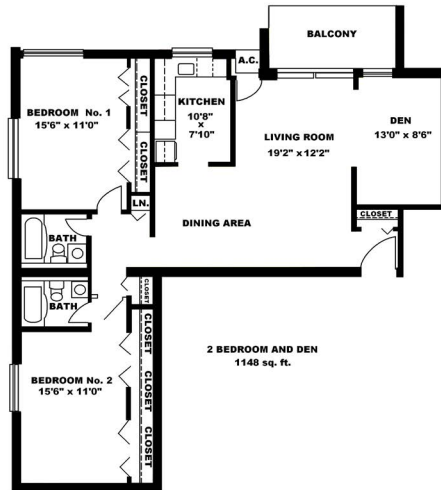


1 BEDROOM  
710 sq. ft.

NOTE: DIMENSIONS SHOWN ARE APPROXIMATE

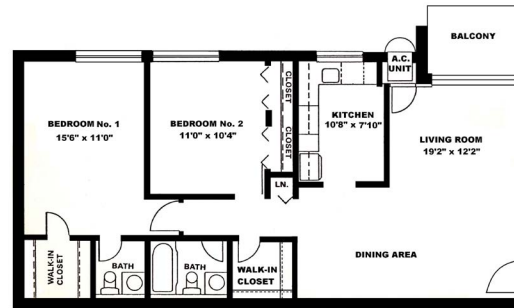


NOTE: DIMENSIONS SHOWN ARE APPROXIMATE



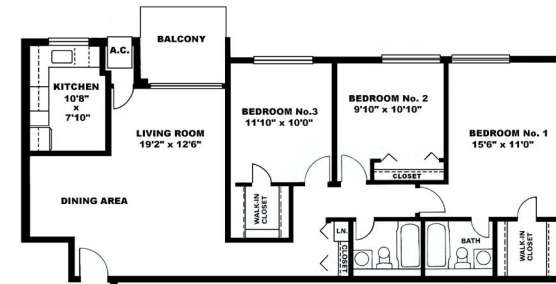
2 BEDROOM AND DEN  
1148 sq. ft.

NOTE: DIMENSIONS SHOWN ARE APPROXIMATE



2 BEDROOM AND 1.5 BATH  
943 sq. ft.

NOTE: DIMENSIONS SHOWN ARE APPROXIMATE



3 BEDROOM  
1169 sq. ft.

NOTE: DIMENSIONS SHOWN ARE APPROXIMATE

