



# St. Mary's Landing

29935 Three Notch Road, Charlotte Hall, MD 20622

**Business & Land For Sale**

## RENAUD CONSULTING

COMMERCIAL REAL ESTATE

### Quick Facts

#### PROJECT SIZE

9,380 SF restaurant space

1,000 SF of apartment space on 2nd floor

1.23 Acres of Land



#### DEMOGRAPHICS

POPULATION | AVG. INCOME

Distance	Population	Avg. Income
1 mile	1,244	\$125,850
3 mile	6,540	\$143,112
5 mile	17,789	\$135,631

### Alan Tan

Direct | 571.765.4440

Cell | 202.888.3045

Email | [atan@renaudconsulting.net](mailto:atan@renaudconsulting.net)

Freestanding restaurant building with great visibility from Three Notch Road (Route 5). 78 acres development across the street with mix use including hotel.

[Click For Street View](#)

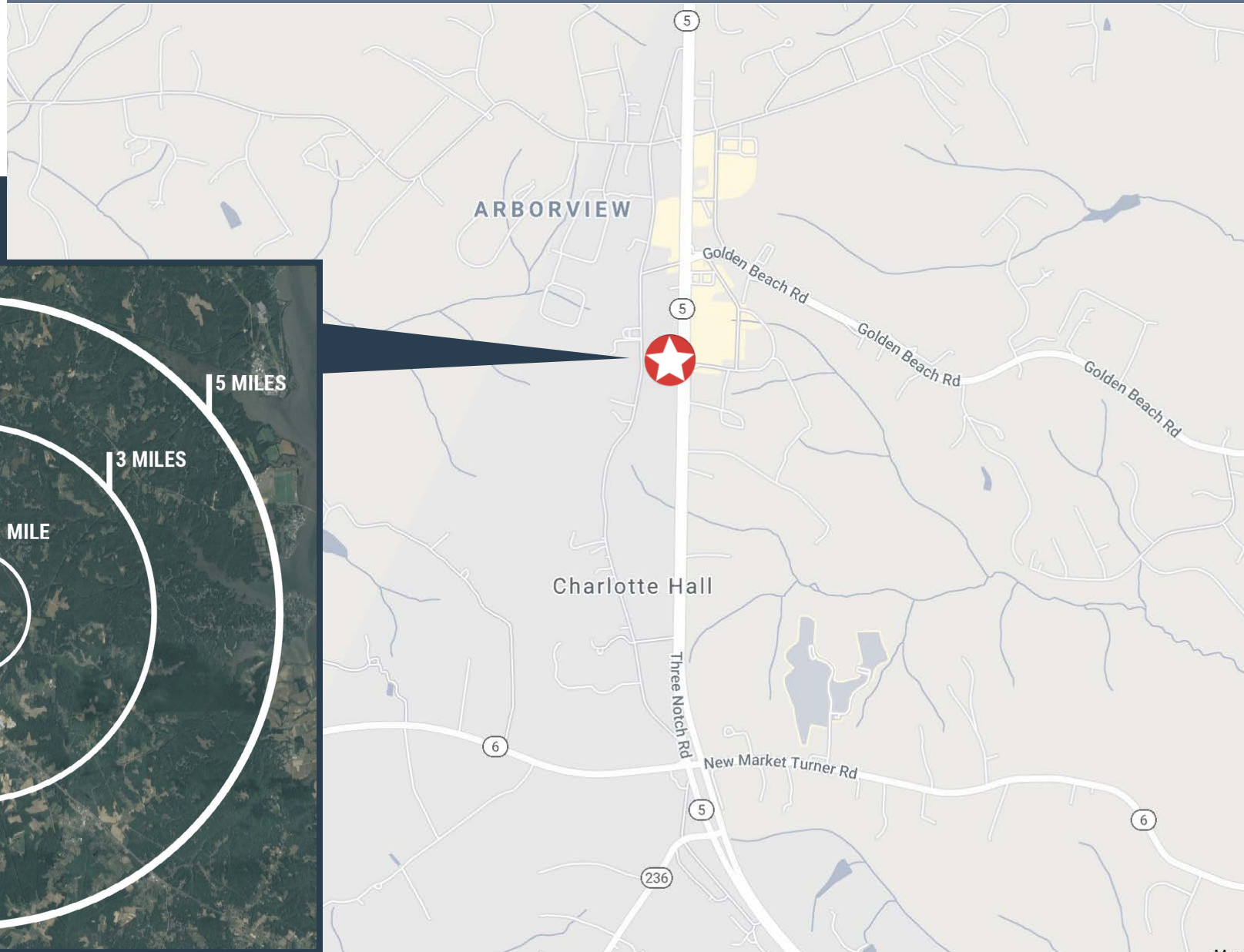




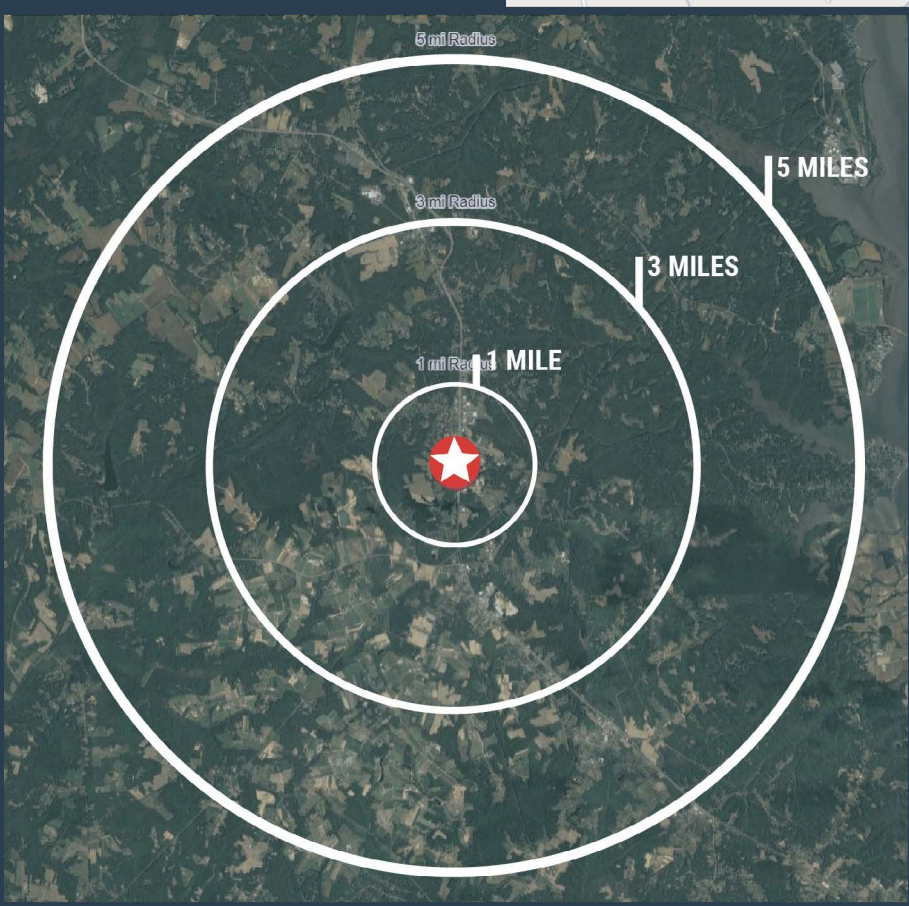


# Location Map

**RENAUD**  
**CONSULTING**  
COMMERCIAL REAL ESTATE



# Radius Map





# Competitive Map

**RENAUD**  
**CONSULTING**  
COMMERCIAL REAL ESTATE

## In The Area

### NEARBY RETAILERS

- 7-Eleven
- Burger King
- McDonalds
- Sports Clips
- Dunkin'
- Pizza Hut
- ACE Hardware
- Sweet Frog
- Hair Cuttery
- Papa Johns
- Taco Bell
- Popeyes
- Food Lion
- Wendy's
- Walgreens
- AutoZone

