



# Owen's Creek Convenience Store

1534 Owens Creek Rd, Mineral, VA 23117

**Retail Space for Lease/Sale**

**RENAUD**  
**CONSULTING**  
COMMERCIAL REAL ESTATE

## Quick Facts

### PROJECT SIZE

1.13 Acres

### AVAILABILITY

1,820 SF (Retail)

700 SF (House)

### DEMOGRAPHICS

POPULATION AVG. INCOME

5 mile	6,845	\$88,758
10 mile	25,546	\$102,767
15 mile	72,746	\$119,854



**Alan Tan**

Direct | 571.765.4440

Cell | 202.888.3045

Email | [atan@renaudconsulting.net](mailto:atan@renaudconsulting.net)

The space sits on 1.13 Acres of land, and is positioned on the corner of Holly Grove Drive and Owens Creek Road.

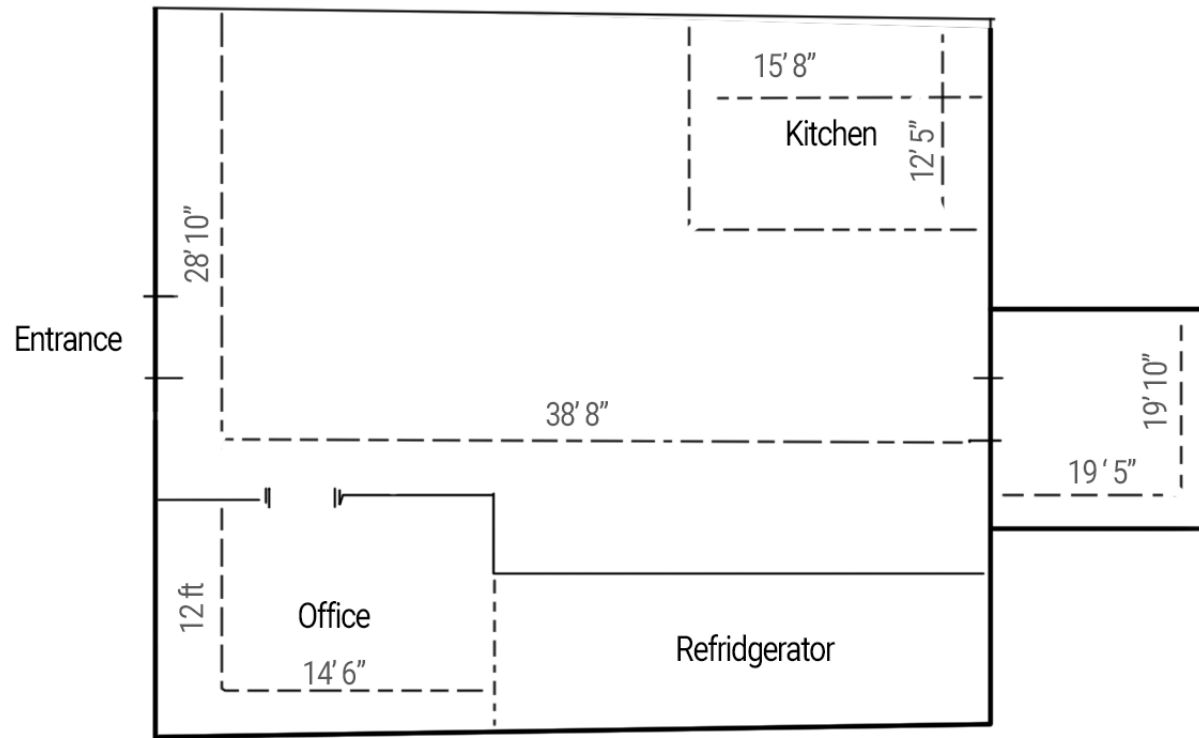
[Click For Street View](#)





# Floor Plan

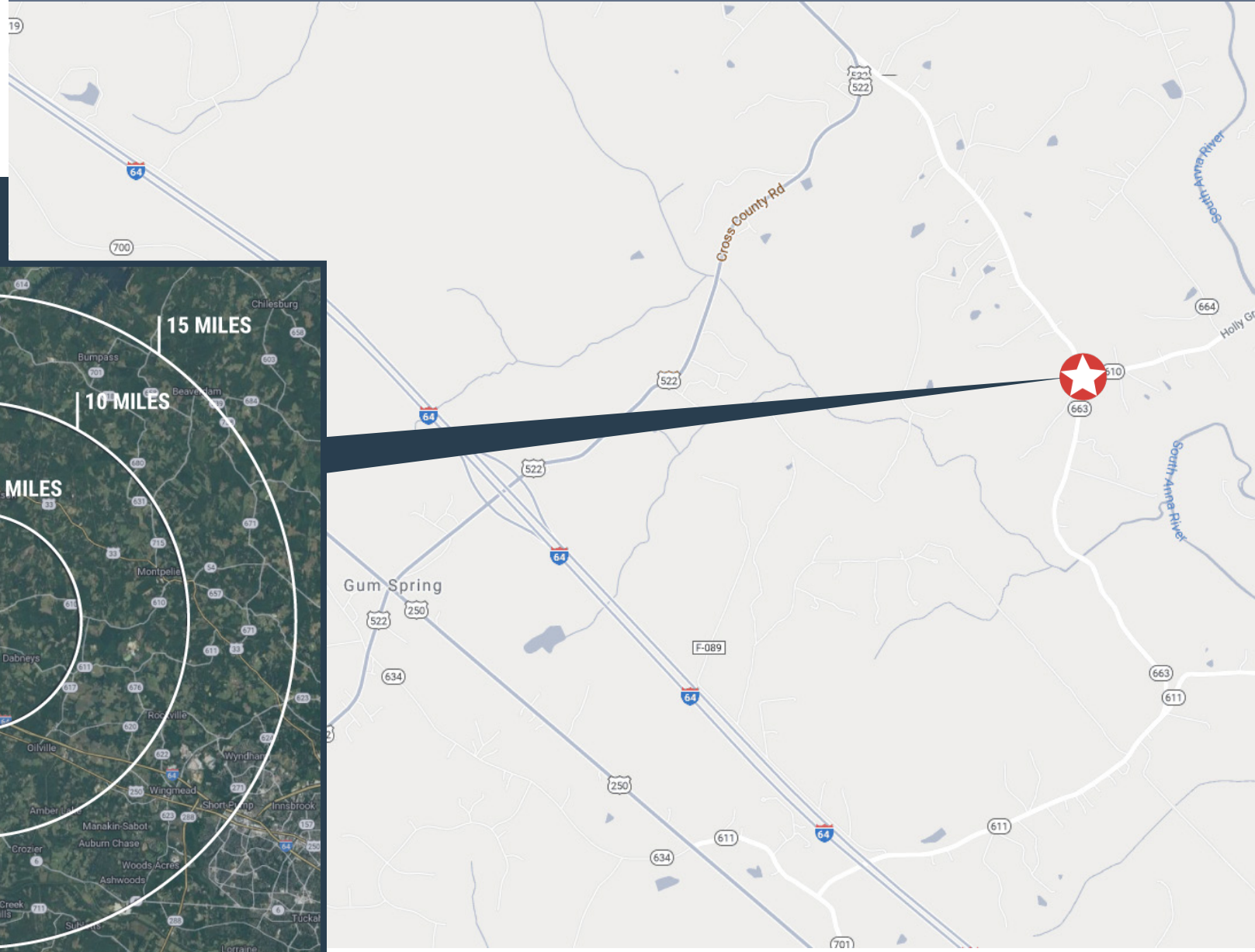
**RENAUD**  
**CONSULTING**  
COMMERCIAL REAL ESTATE



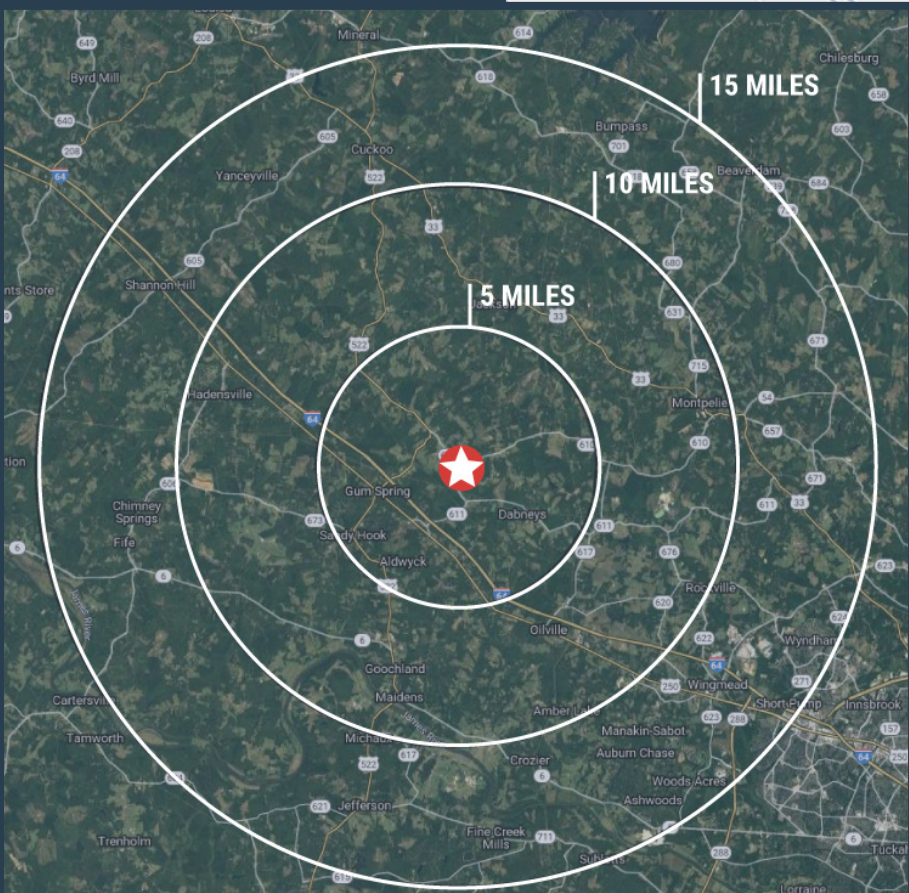


# Location Map

**RENAUD**  
**CONSULTING**  
COMMERCIAL REAL ESTATE



# Radius Map





# Competitive Map

**RENAUD**  
**CONSULTING**  
COMMERCIAL REAL ESTATE

## In The Area

### NEARBY RETAILERS

- Dollar General
- CITGO
- US Postal Service
- Dairy Queen
- BP
- Exxon
- U-Haul
- The Good Upholstress
- Holly Grove Fire Dept.
- Holly Grove Rescue Squad

