



RENAUD
CONSULTING
 COMMERCIAL REAL ESTATE

3020 Javier Road, Merrifield, VA 22031

Office Space For Lease



Quick Facts

AVAILABILITY

10,400 SF on 3 floors,
 approximately 3,412 SF per floor
 Building Access 24/7

DEMOGRAPHICS

POPULATION AVG. INCOME DAYTIME EMP

	POPULATION	AVG. INCOME	DAYTIME EMP
1 mile	20,955	\$121,433	32,709
3 mile	146,495	\$157,109	74,765
5 mile	372,453	\$168,692	244,536

○ Ann Page
 Direct | 571.765.4430
 Cell | 703.408.2988
 Email | apage@renaudconsulting.net

○ Larry Herbst
 Direct | 571.765.4419
 Cell | 716.864.2387
 Email | lherbst@renaudconsulting.net

- Located 1 mile to Inova Fairfax Hospital, Dunn Loring Metro, Route 50 exit on Beltway.
- 3 blocks to Mosaic District's Restaurants, shopping and personal services.
- The site features central HVAC for each floor, plus individually-controlled office units and operable windows, 34 parking spaces plus on-street parking, fully sprinklered, cable and fiber service through Verizon and Cox.
- The property is ideal for medical use. Handicapped-accessible, sound-isolating partitions, gurney-sized elevator.

Click For Street View



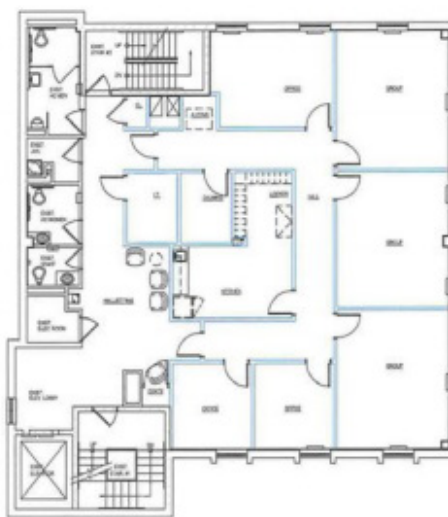


Floor Plan

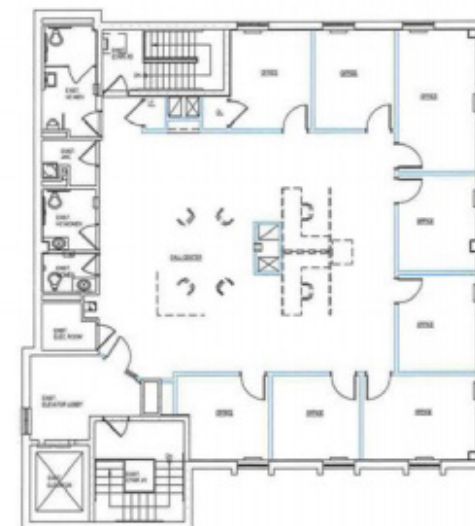
RENAUD
CONSULTING
COMMERCIAL REAL ESTATE



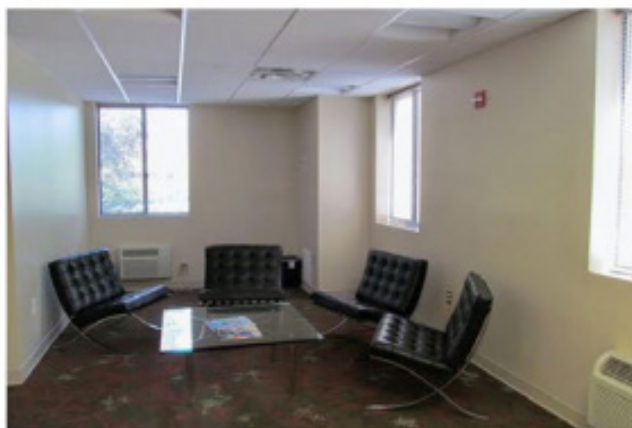
1st Floor



2nd Floor



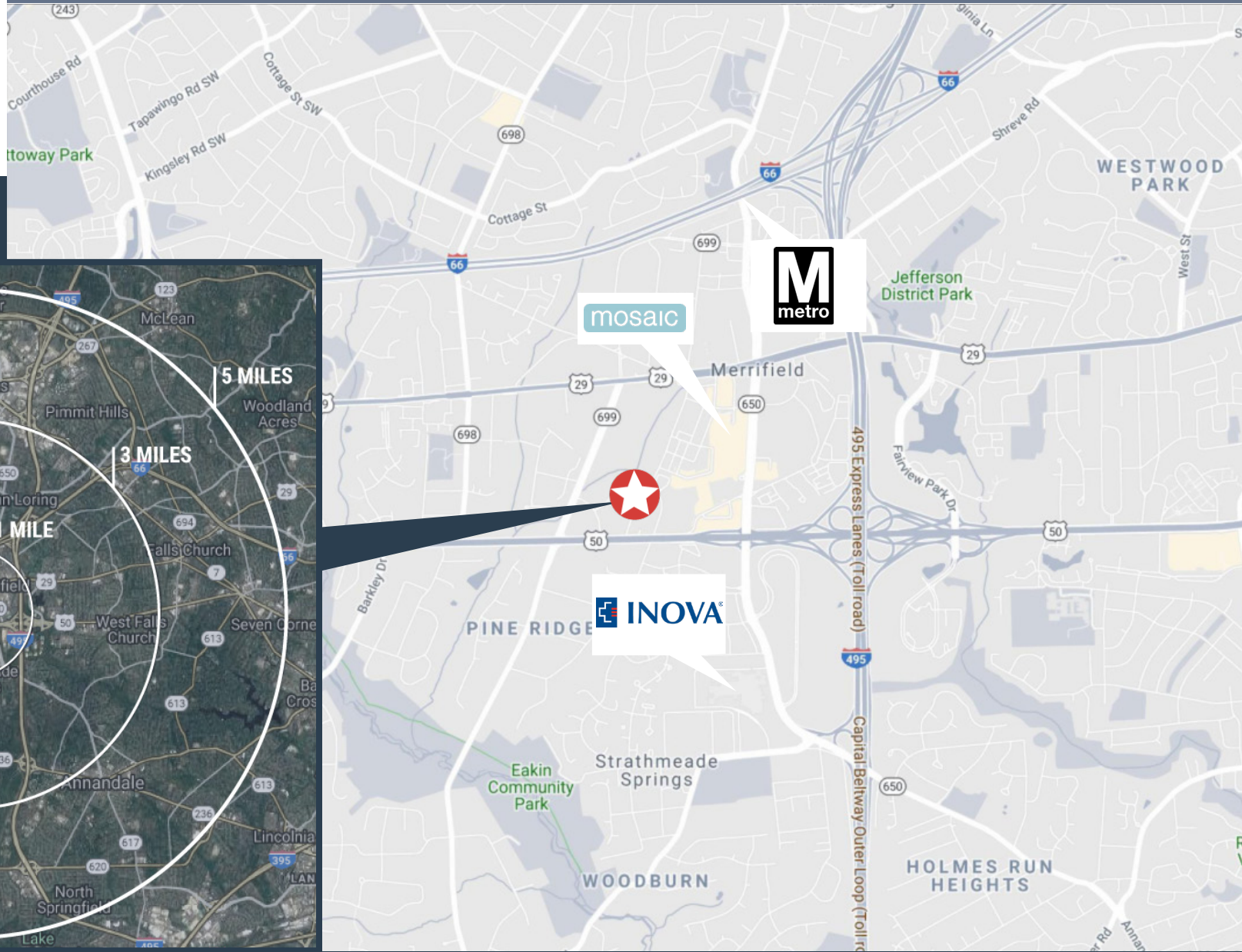
3rd Floor





RENAUD
CONSULTING
 COMMERCIAL REAL ESTATE

Location Map



Radius Map

